

PART OF THE S.W. 1/4, OF SEC. 28, T.7N., R.1W., S.L.B. & M.

39

NORTH OGDEN
BLOCK 40, PLAT A

TAXING UNIT: 10

IN NORTH OGDEN CITY

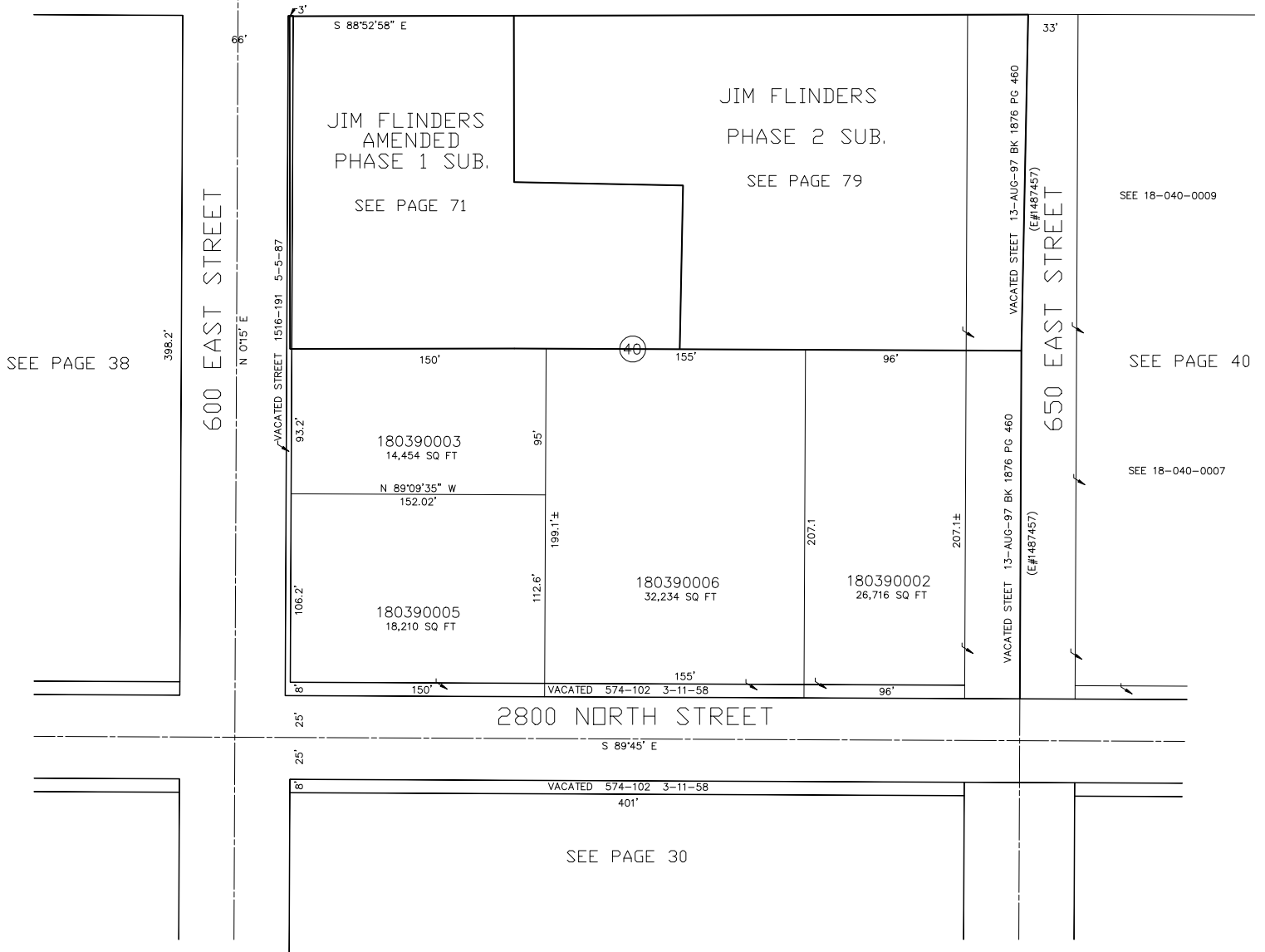
SCALE 1" = 50'

SEE PAGE 51

401'

2850 NORTH STREET

S 89°45' E



SEE 18-040-0009

SEE PAGE 40

SEE 18-040-0007

SEE PAGE 38

SEE PAGE 30